

Clarinets in B \flat

Down Yonder

A

6

12

18

25

31

36

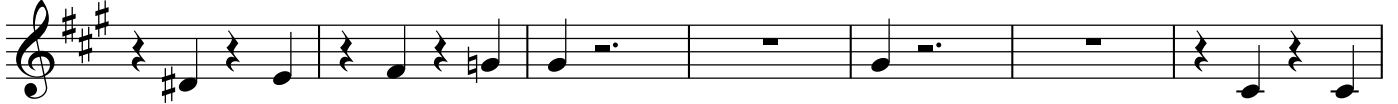
B

47

53



59



66



72



78



85



93



100



107



114



Clarinets in B \flat

120

The musical notation is on a single staff with a treble clef and a key signature of three sharps (F#, C#, G#). The melody consists of quarter and eighth notes, with some notes beamed together and a slur over a group of notes. The piece ends with a double bar line.